

LANE COUNTY SHERIFF'S OFFICE



Presented by:
Sheriff Cliff Harrold



FY 19-20 Proposed Budget Presentation

Department Overview

Mission: To conserve the peace.

The Sheriff's Office is committed to Justice and Integrity, Sworn to Protect Lane County, and Honored to Serve.

Divisions of the Sheriff's Office

Office of the Sheriff 1.5 FTE

Administration 61.0 FTE

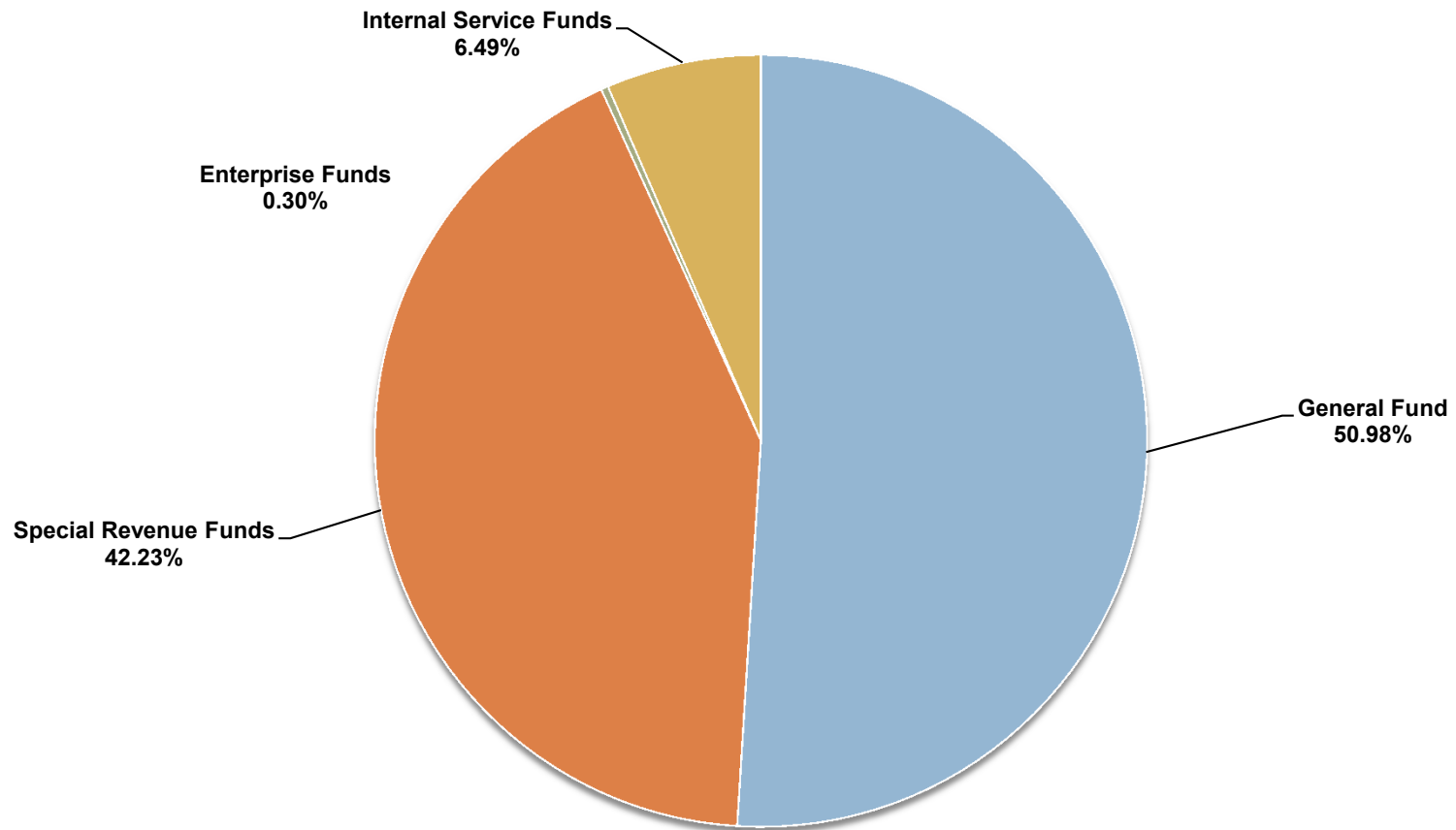
Police Services 73.5 FTE

Adult Corrections 164.75 FTE



FY 19-20 Proposed Budget Presentation

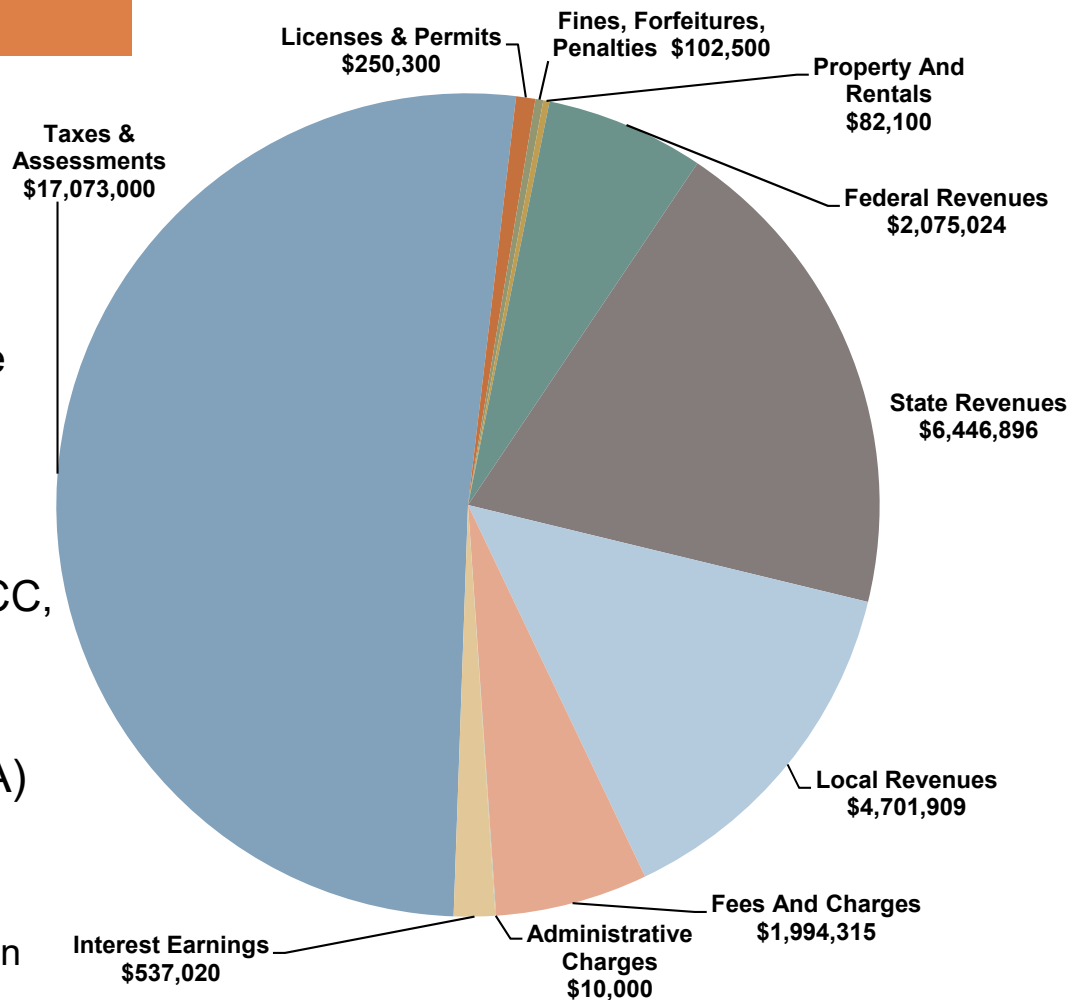
FY 19-20 Budget by Fund Type



FY 19-20 Budget Details

19-20 RESOURCES

- General Fund
- Public Safety Levy
- Police Services Contracts
 - ▣ Cities of Creswell & Veneta
 - ▣ Oregon State Parks and Marine Board
 - ▣ Bureau of Land Management
- Dispatch Contracts
 - ▣ Oakridge PD, Oakridge Fire, LCC, Parole and Probation
- Jail Contract w/ City of Eugene
- Community Corrections Act (CCA)
- Grants

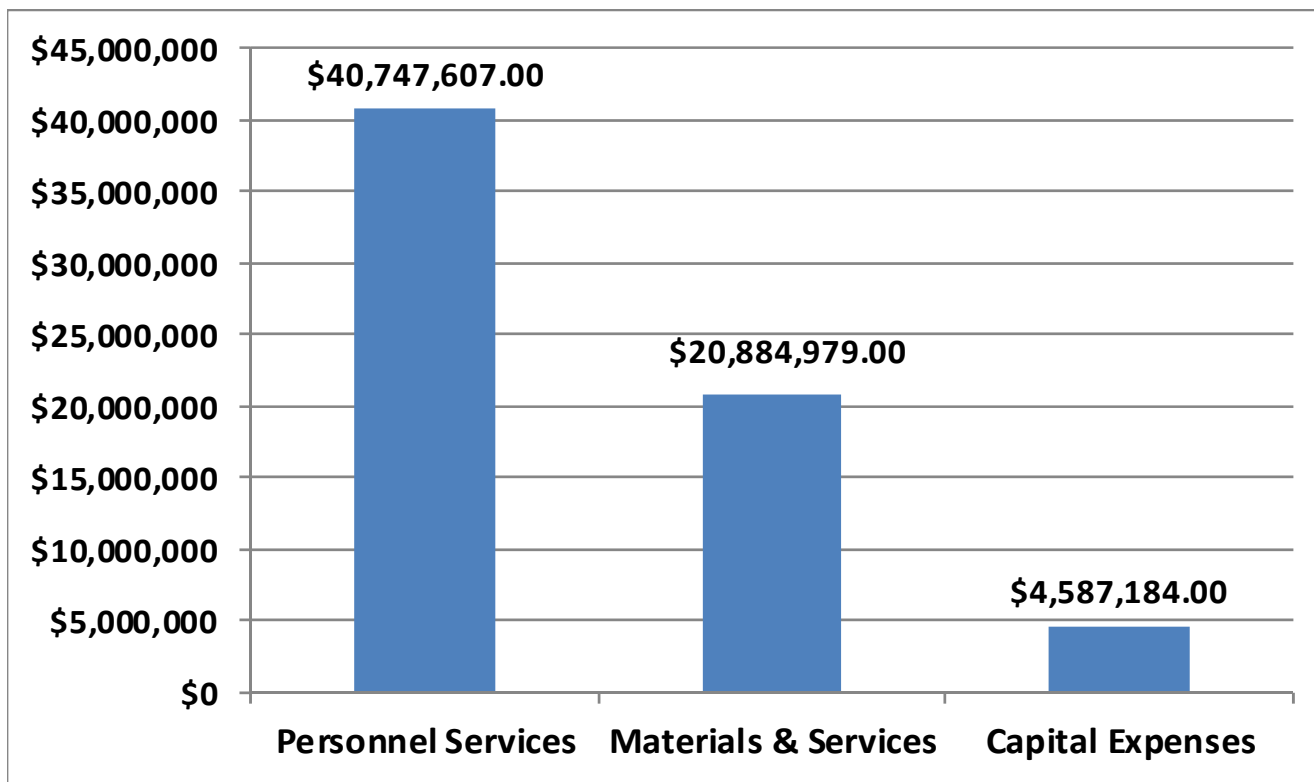


FY 19-20 Proposed Budget Presentation



FY 19-20 Budget Details

19-20 EXPENDITURES



Partnerships

The Sheriff's Office partners with the **Oregon State Police** to investigate fatal traffic crashes on Lane County roads that are criminal in nature. This allows the Sheriff's Office to take advantage of their trained crash investigators and equipment in exchange for handling calls for service within State parks located in Lane County.



Partnerships

The Sheriff's Office currently partners with **Oakridge Police**, **Oakridge Fire** and **Lane Community College** providing dispatch services, and with **Lane County Parole and Probation** providing dispatch, records and property/evidence services.



Lane
Community
College



Partnerships

- The Sheriff's Office partners with the cities of **Creswell** and **Veneta**, **Oregon State Parks**, the **Oregon State Marine Board**, and **Bureau of Land Management** to provide patrol services to a variety of areas in Lane County.



Partnerships

- The Sheriff's Office assists **Lane County Treatment Courts** by applying for grant funding and managing program revenues and expenses.
- The Sheriff's Office is the fiduciary agency for the **Lane Regional Interoperability Group (LRIG)**, and the **Southwest 7 Radio Consortium**. The Sheriff's Office budget reflects the revenues and expenses for these programs as pass through funds.
- Search and Rescue partners with **Rotary** and **Cabela's** each year to put on the *Annual Life Jacket Exchange* event, providing hundreds of Lane County children with life jackets.



Partnerships

- The Sheriff's Office partners with the **Drug Enforcement Administration** to host a National Drug Take Back Day twice a year to provide a place for community members to safely dispose of prescription drugs in effort to decrease the misuse of these often addictive medications.
- Each year Sheriff's Office Marine Patrol Deputies partner with local **Bi-Marts** to offer free boat inspections to community members to help boaters be as safe as possible on our lakes and rivers.



Partnerships

The Sheriff's Office works with a variety of community partners through the Mental Health Summit to continue to improve the care and services provided to those in Lane County who suffer from severe and persistent mental illness, which continues to be a large percent of the jail population.



Springfield Police Department
Lane County DA's Office
PeaceHealth
Lane County Health & Human Services
Lane County Behavioral Health
Lane County Circuit Court
Lane County Public Defender's Office
ColumbiaCare

Shelter Care
Laurel Hill
Oregon State Hospital
Springfield Municipal Court
Eugene Municipal Court
Trillium
Eugene Mission
Hourglass Crisis Center
South Lane County Mental Health



Administrative Division

Administrative Division = 61 FTE

- Civil Processing
- Concealed Handgun Licensing
- Dispatch
- Fingerprinting
- Registration of Sex Offenders
- Fiscal
- Jail Records
- Professional Standards
- Property and Evidence
- Police Records
- Public Information Officer
- Radio Technology
- Training



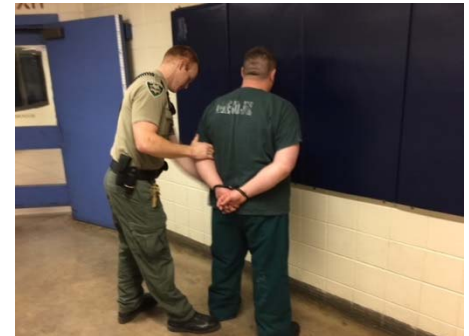
FY 19-20 Proposed Budget Presentation

FTE: 61.0
Proposed FY 19-20 Expenses: \$16,711,062

Corrections Division

Adult Corrections Division = 164.75 FTE

- Jail (382 beds)
 - ▣ Medical and Mental Health Services
- Residential Reentry Center/ Community Corrections Center (RRC/CCC)
- Defendant and Offender Management Center (DOMC): Jail population management and Alternative to jail programs
 - ▣ Sheriff's Work Crew (SWC)
 - ▣ Community Service Program
 - ▣ Education Program
 - ▣ Sit In Program
 - ▣ Electronic Surveillance Program (ESP)



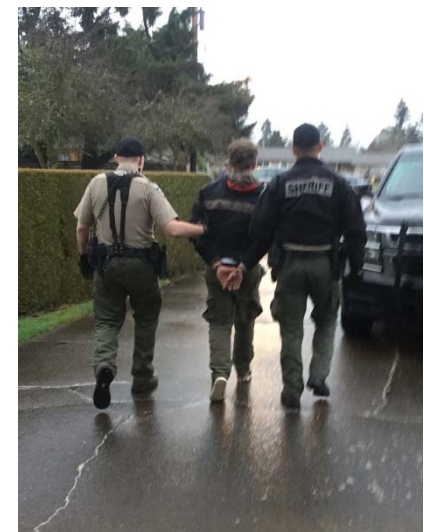
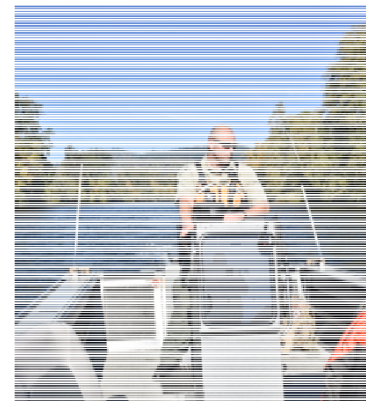
FY 19-20 Proposed Budget Presentation

FTE: 164.75
Proposed FY 19-20 Expenses: \$34,827,583

Police Services Division

Police Services Division = 73.5 FTE

- ❑ Patrol (~4,600 square miles)
- ❑ Search and Rescue (SAR)
- ❑ Civil Service
- ❑ Court Security and Prisoner Transport
- ❑ Criminal Investigations Section
- ❑ Contract Law Enforcement
 - ❑ Marine Patrol
 - ❑ Bureau of Land Management
 - ❑ Patrol of forest lands
 - ❑ Dunes Patrol
 - ❑ Cities of Creswell and Veneta



Highlights of FY 18-19 Outcomes

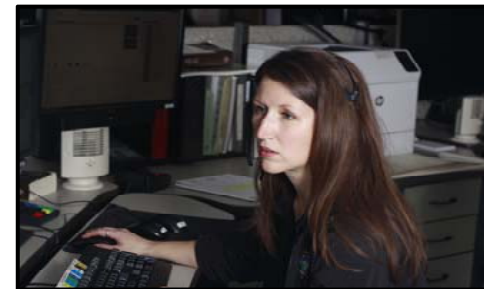
Over 63% decrease in Capacity Based Releases (using monthly average) as compared to FY 12/13 pre-levy.



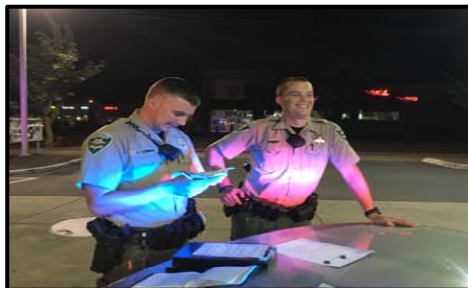
Mental health services for inmates continues to be a focus in the jail in effort to stabilize inmates in mental health crisis and to continue treatment after release.



Maintain over 300 volunteers who donate time to service the residents and visitors of Lane County



Dispatch received 62,935 calls for service in 2018. That's an average of 172 calls per day.

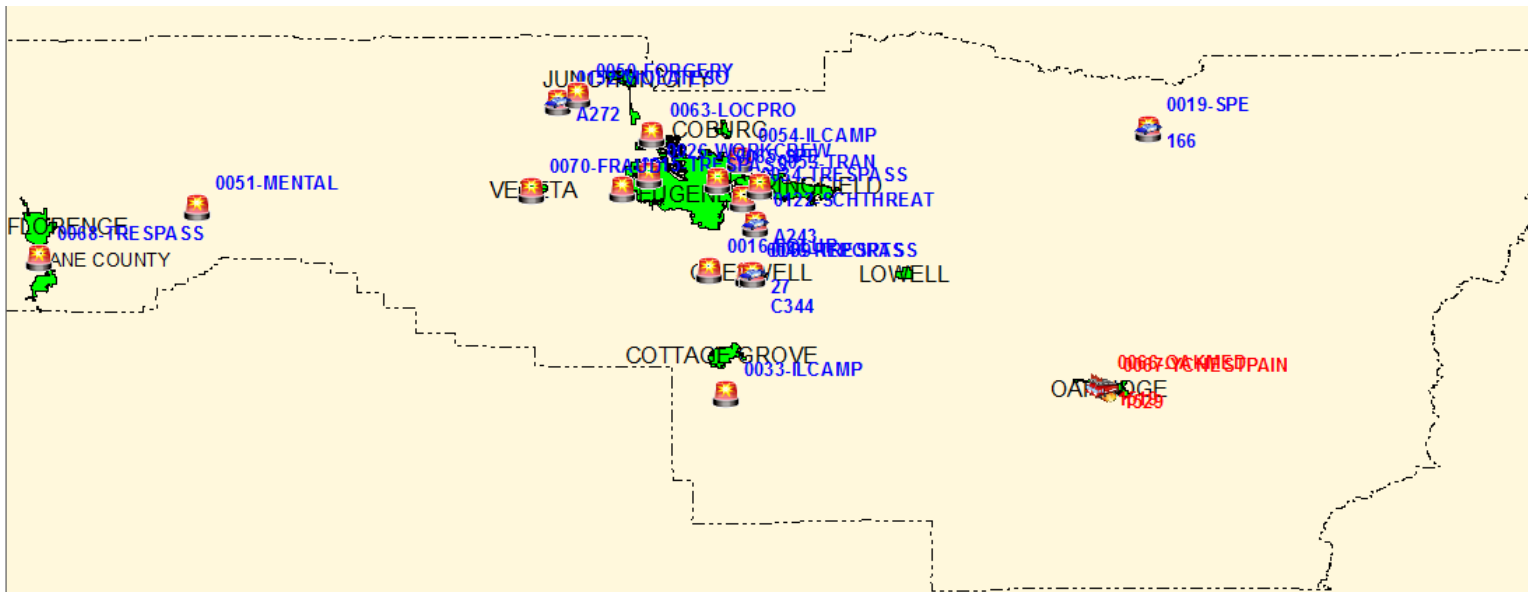


Four deputy sheriffs completed a 32-40 week training including the police academy to assist in maintaining 24 hour patrols.



Future Challenges & Opportunities

- Providing adequate law enforcement services to residents in unincorporated Lane County continues to be far out of reach due to lack of funding for additional patrol deputies. Covering over 4,600 sq. miles with often only three deputies and a sergeant on at a time allows the Sheriff's Office to only respond to the highest priority life safety calls for service.*



Future Challenges & Opportunities

Lane County continues to have the highest number of traffic fatalities in the state. Deputies have little if any time to proactively provide impactful traffic enforcement, resulting in an 88% reduction in the number of citations issued for dangerous driving behaviors as compared to citation averages for FY 05-09.

Driver, 17, dies from injuries after deadly head-on Marcola Road crash that killed man

by KVAL | Monday, August 7th 2017

AA



FY 19-20 Proposed Budget Presentation

Future Challenges & Opportunities

- *Facilities are aging out, requiring costly repairs and decreasing efficiency and safety for operations.*
 - *The fire alarm system in the jail is obsolete and repair is no longer an option.*
 - *The jail's original roof is leaking and in need of repair.*
 - *The jail's elevators routinely fail and entrap public, staff, and inmates. Replacement parts are no longer available for the elevators.*
 - *The plumbing in the courthouse has failed on more than one occasion, causing sewage to come into detective's offices.*
 - *Inmate holding and transport areas in the courthouse are inefficient, often creating situations where inmates are traveling through areas where victims and families are waiting.*





Lane County Strategic Plan

Safe, Healthy County

The Sheriff's Office provides emergency response to life safety events, investigations of felony persons crimes, a jail to hold pre-trial defendants and sentenced offenders, Civil paper service, Search and Rescue, and crime prevention programs to help combat preventable crimes. The Sheriff's Office continues to look for ways to provide proactive patrol services in addition to increasing our ability to respond to all calls for service, all of which would contribute to the safety of Lane County.

Vibrant Communities

The Sheriff's Office is committed to providing public safety services to help make communities safer. Adequate law enforcement can contribute to a higher quality of life for community members. Continuing to maintain current jail beds, adding patrol services, and increasing investigative services to include property crimes may assist in drawing in new businesses and families to Lane County.

Robust Infrastructure

The Sheriff's Office runs an alternative to jail program called the Sheriff's Work Crew which resides in the Defendant Offender Management Center. Inmates assigned to serve their sentences in this program assist in improving the condition of public lands and facilities by serving on daily work crews that perform a variety of services including litter pickup and invasive species removal.

Our People & Partnerships

The Sheriff's Office partners with a wide variety of public and private entities to provide a myriad of services to Lane County residents and visitors. These partnerships allow us to serve our community members more thoroughly and with greater resources than the Sheriff's Office could provide alone.



Questions?

20

Thank you Lane County!



□ *Up Next: 10 Minute Break*



FY 19-20 Proposed Budget Presentation